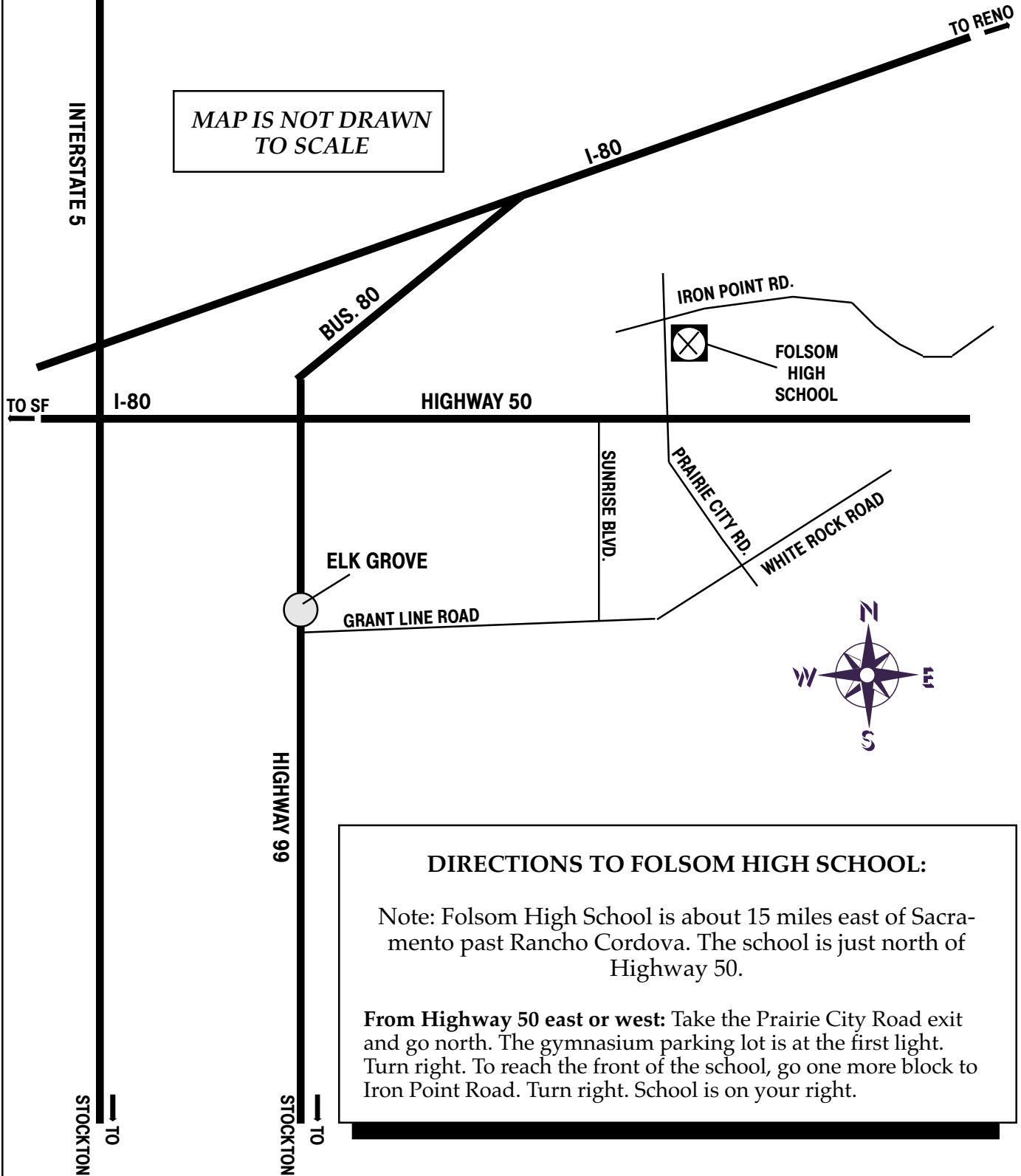


FOLSOM HIGH SCHOOL

1655 Iron Point Road
Folsom

MAP IS NOT DRAWN
TO SCALE



DIRECTIONS TO FOLSOM HIGH SCHOOL:

Note: Folsom High School is about 15 miles east of Sacramento past Rancho Cordova. The school is just north of Highway 50.

From Highway 50 east or west: Take the Prairie City Road exit and go north. The gymnasium parking lot is at the first light. Turn right. To reach the front of the school, go one more block to Iron Point Road. Turn right. School is on your right.